

**CPS ENERGY**  
**Quarterly STEP Report to the**  
**CITY OF SAN ANTONIO**

**4th QUARTER**  
**FOR CPS ENERGY FISCAL YEAR 2021**

**Prepared June 2021**

## Executive Summary

Ordinance 2009-05-21-0399 authorized the funding of the CPS Energy conservation and sustainability STEP (Save for Tomorrow Energy Plan) program. The STEP Program was designed as a demand management program to encourage customers to improve the energy efficiency of their homes, buildings and processes, thereby saving electricity and reducing system demand. The program was initiated to avoid 771 megawatts (MW) of demand growth between 2009 and 2020. The 771 MW is equivalent to the capacity of a large power plant. To put this into perspective, the CPS Energy Spruce 1 power plant has a generation capacity of 575 MW, and Spruce 2 has a generation capacity of 750 MW.

CPS Energy's successfully reached the original goal of the STEP programs by achieving 845 MW a year early. To build on the success of STEP, City Council approved ordinance 2020-01-30-0063, creating a one-year extension (**STEP Bridge**) whereby CPS Energy will achieve an estimated 75 MW of additional demand reduction at a cost of \$70 million.

This quarterly report is a part of the accountability procedures established to assist City staff in evaluating the STEP program.

## Program Expectations

The demand side management programs in **STEP Bridge** enable customers who participate directly in the program to lower their utility bills almost immediately. Those customers who do not directly participate still benefit in the short run because lower system usage reduces overall system costs and produces fuel savings to all customers. All customers benefit in the long term as CPS Energy is able to postpone the need for building additional generation capacity and raising utility rates to finance the construction of new generation.

CPS Energy is expected to yield approximately 75 MW of additional energy demand reduction under **STEP Bridge**.

Another program expectation exhibited in the City Ordinance is the STEP Funding Accountability Procedures CPS Energy must follow. The procedures are listed below:

- All funds collected for STEP programs, either from base rates or through the fuel adjustment, must be accounted for separately.
- CPS Energy shall provide an annual report, prepared by an independent third party consultant, to the City which quantifies the kilowatt savings from STEP expenditures by customer class and other measures deemed necessary by the City.
- Based on the report provided and the amount of STEP expenditures determined to be eligible for recovery through the fuel adjustment, CPS Energy will calculate the annual per kilowatt hour charge. The report will be reviewed and approved by City staff before implementation of the per kilowatt hour charge.

- City staff will monitor the recovery through the fuel adjustment on a monthly basis. Annually, the amount of under or over recovery, if any, will be determined and the fuel adjustment will be adjusted accordingly to ensure that only the amount of eligible STEP expenditures are recovered.
- CPS Energy must maintain documentation of all STEP expenditures, by customer class and other measures deemed necessary by the City.
- CPS Energy shall provide quarterly reports to the City staff which show year to date STEP expenditures by program and customer class, funds accumulated and estimated kilowatt savings, and other measures deemed necessary by the City.
- Examples of detailed quarterly report information include but are not limited to the following: number of kilowatts saved by customer class and program type; the number of participants and contractors; geographic area and council district program activity; and total costs/expenditures by program type.
- CPS Energy shall provide an annual report to the City which shows the incentive payments made as a result of the Commercial Demand Response program for the prior 12 months and other measures deemed necessary by the City.
- A quarterly report detailing information shall be made available to the public with sufficient protection regarding confidential information as deemed necessary by the City.

### **Funding Recovery**

The total cost of the STEP Program during the 2009 to 2020 time period was \$723 million with an annual cost ranging from \$12.3 million to \$111 million, of which approximately \$9 million annually is recovered in base rates. The remaining annual amount is recovered through an adjustment in the fuel surcharge. For the **STEP Bridge** one-year extension, CPS Energy will achieve an estimated 75 MW of additional demand reduction at a cost of \$70 million. The cost recovery begins in the following fiscal year and subject to third party review and verification of incremental kilowatt reduction. Customers offset the additional costs of these fuel surcharges by implementing some of the STEP Bridge energy efficiency measures.

The CPS Energy fiscal year runs from February 1<sup>st</sup> through January 31<sup>st</sup>, and the fiscal year is denoted by the year in which the fiscal year ends. For example, CPS Energy FY 2021 would be the period from February 1, 2020 through January 31, 2021.

Following is a synopsis of STEP recovery to date and the recoverable amounts for the recovery that started in July of 2020 for Fiscal Year 2020:

Table 1:

Fiscal Year	Target Recovery	Actual Recovery	Cumulative Over/(Under)
2009	\$3,489,514	\$4,060,315	\$570,801
2010	\$12,222,745	\$13,942,711	\$2,290,767
2011	\$19,588,918	\$19,907,374	\$2,609,223
2012	\$30,697,067	\$27,495,601	\$(592,243)
2013	\$50,534,910	\$51,158,184	\$31,031
2014	\$55,407,519	\$54,838,828	\$(537,660)
2015	\$58,425,176	\$57,212,156	\$(1,750,680)
2016	\$62,883,664	\$65,273,384	\$639,040
2017	\$102,210,184	\$104,133,945	\$2,562,801
2018	\$80,735,314	\$78,917,724	\$744,624
2019	\$69,123,763	\$68,268,607	\$(110,532)
2020	\$72,815,072	TBD(Jul20-Jun21)	TBD

For the calculations of the adjustments to the fuel surcharge listed below, a majority of the Over Recovery was taken into account, and the remaining amounts will be taken into account when the FY 2021 fuel surcharge adjustment is calculated.

FY	Incremental STEP Cost	Recovery Period	Residential Impact per 1000 kWh
			STEP
2009	\$3.5M	Jul09-Jul10	\$0.21
2010	\$11.7M	Aug10-Jul11	\$0.77
2011	\$17.4M	Aug11-Jul12	\$1.09
2012	\$28.2M	Aug12-Jun13	\$1.74
2013	\$50.8M	Jul13-Jun14	\$2.78
2014	\$55.0M	Jul14-Jun15	\$3.00
2015	\$58.4M	Jul15-Jun16	\$3.10
2016	\$64.7M	Jul16-Jun17	\$3.47
2017	\$101.6M	Jul17-Jun18	\$5.41
2018	\$79.0M	Jul18-Jun19	\$4.14
2019	\$68.4M	Jul19-Jun20	\$3.53
2020	\$73.2M	Jul20-Jun21	\$3.84

As noted in the table above, a new STEP recovery factor was implemented in July 2020, with recovery going through June 2021. This recovery factor was based on the CPS Energy FY2020 STEP expenditures of \$82,089,845. Removing the base rate recovery, the recoverable amount for FY2020 was \$72,815,072.

## **Summary of Residential Programs**

HVAC Program – offers incentives for the purchase of eligible high efficiency central air conditioners, heat pumps and room air conditioners.

Home Efficiency Program – targets a wide range of energy efficiency measures that save cooling and heating energy in existing homes.

Smart Thermostat Program – offers a residential air-conditioner demand response control program, where CPS Energy installs a free Honeywell programmable thermostat in participating customers' homes when they enroll in the program. CPS Energy uses the thermostat to cycle off the compressor of participating air conditioners during periods of peak demand throughout the summer (June – September).

Bring Your Own Thermostat (BYOT) Program – offers incentives for a residential air-conditioner demand response control program, where a customer selects a programmable thermostat that actually learns their temperature preferences to program itself and automatically adjust to an energy efficient temperature when they're away. CPS Energy has teamed up with Nest, Honeywell, Resideo and Energy Hub to offer customers these thermostats.

Nest Direct Install Program – offers former Home Manager customers the option to replace their older generation devices with a free installed Nest programmable thermostat.

Solar Photovoltaic Rebates – offers incentives for the installation of both solar photovoltaic systems and solar water heaters.

New Residential Construction – offers incentives to developers to build new homes at least 15% more energy efficient than required by the current CoSA building code.

Cool Roof – offers incentives to homeowners to install qualified Energy Star Certified roofing products which reduce the energy required to cool a home by reflecting solar energy, lowering roof surface temperatures.

Retail Channel Partnerships – offers point of purchase incentives on ENERGY STAR lighting and room air conditioners at participating retailers.

Home Energy Assessments – offers a free in-person assessment helping customers identify energy saving opportunities in their home, which may also include LED lighting and a WiFi programmable thermostat directly installed during the home visit.

Energy Savings Through Schools – incorporates energy efficiency into the 6<sup>th</sup> grade classroom by equipping teachers, students and parents with in-class curriculum and take-home kits full of energy efficient products.

Weatherization – offers an assistance program designed to help families in need reduce their monthly utility bills. Eligible participants, whether they are homeowners or renters, may receive free weatherization upgrades designed to increase the energy efficiency of their homes.

### **Summary of Commercial Programs**

Solar Photovoltaic Rebates – offers incentives for the installation of both solar photovoltaic systems and solar water heaters.

C&I Solutions – offers an energy assessment program focused on helping business customers identify opportunities and rebate offerings for energy efficiency measures including lighting, HVAC, and refrigeration.

Schools and Institutions – offers contractor led incentives which focus on helping schools and government agencies reduce energy use through benchmarking, technical assistance, energy master planning workshops, and rebate offerings for energy efficiency measures.

Small Business Solutions – offers contractor led incentives for energy efficiency measures for small business customers with less than 100 kW demand.

Whole Building Optimization – offers contractor led incentives for building optimization, which includes tools and strategies to enhance a facility’s operational efficiency.

C&I Demand Response – incentivizes Commercial & Industrial customers to reduce energy use during times of peak summer demand. Demand Response customers take steps to lower their facilities’ energy demand for a 1 to 3-hour curtailment period. The performance is evaluated, and incentives are tied to the customers’ ability to reduce demand.

### **CPS Energy FY 2021 4th Quarter STEP Report**

Attachment A illustrates the kW reduction and dollars expended for the various residential efficiency and demand response programs. The data are presented for the 3rd Quarter only. Since the fiscal year for CPS Energy runs from February 1 to January 31, the 34th Quarter covers November 1, 2020 through January 31, 2021.

Attachment B illustrates the kW reduction and dollars expended for the various commercial efficiency and demand response programs. The data are presented for the 4th Quarter only. Since the fiscal year for CPS Energy runs from February 1 to January 31, the 4th Quarter covers November 1, 2020 through January 31, 2021.

Attachment C shows the 4th Quarter residential rebate dollars broken down by City Council District. The table shows the numerical data, and the charts are a graphical representation of the numerical data. The Weatherization dollars included only represent the cost of the measures installed. This attachment does not include Smart Thermostat, Nest Direct Install, or BYOT installations, as these are demand response programs and not energy efficiency per se, nor does it include New Home Construction installations, Energy Savings Through Schools or Retail Channel Partnership purchases as these rebates cannot be attributed to individual customer accounts.

Attachment D shows the 4th Quarter commercial rebate dollars broken down by City Council District. The table shows the numerical data, and the charts are a graphical representation of the numerical data. This attachment does not include Commercial & Industrial Demand Response programs, as these are demand response programs and not energy efficiency per se.

Attachment E shows the 4th Quarter number of residential rebates broken down by City Council District. The table shows the numerical values, and the charts are a graphical representation of the numerical data. This attachment does not include Smart Thermostat, Nest Direct Install, or BYOT installations, as these are demand response programs and not energy efficiency per se, nor does it include New Home Construction installations, Energy Savings Through Schools or Retail Channel Partnership purchases as these rebates cannot be attributed to individual customer accounts.

Attachment F shows the 4th Quarter number of commercial rebates broken down by City Council District. The table shows the numerical values, and the charts are a graphical representation of the numerical data. This attachment does not include Commercial & Industrial Demand Response programs, as these are demand response programs and not energy efficiency per se.

Attachment G shows the cumulative residential rebate dollars broken down by City Council District. The table shows the numerical data, and the charts are a graphical representation of the numerical data. The Weatherization dollars included only represent the cost of the measures installed. This attachment does not include Smart Thermostat, Nest Direct Install, or BYOT installations, as these are demand response programs and not energy efficiency per se, nor does it include New Home Construction installations, Energy Savings Through Schools or Retail Channel Partnership purchases as these rebates cannot be attributed to individual customer accounts.

Attachment H shows the cumulative commercial rebate dollars broken down by City Council District. The table shows the numerical data, and the charts are a graphical representation of the numerical data. This attachment does not include Commercial & Industrial Demand Response programs, as these are demand response programs and not energy efficiency per se.

Attachment I shows the cumulative number of residential rebates broken down by City Council District. The table shows the numerical values, and the charts are a graphical representation of the numerical data. This attachment does not include Smart Thermostat, Nest Direct Install, or BYOT installations, as these are demand response programs and not energy efficiency per se, nor does it include New Home Construction installations, Energy Savings Through Schools or Retail Channel Partnership purchases as these rebates cannot be attributed to individual customer accounts.

Attachment J shows the cumulative number of commercial rebates broken down by City Council District. The table shows the numerical values, and the charts are a graphical representation of the numerical data. This attachment does not include Commercial & Industrial Demand Response programs, as these are demand response programs and not energy efficiency per se.

Attachment K illustrates the cumulative residential rebate locations overlaid on a map of Bexar County and the City Council Districts. This attachment does not include Smart Thermostat, Nest Direct Install, or BYOT installations, as these are demand response programs and not energy efficiency per se, nor does it include New Home Construction installations, Energy Savings Through Schools or Retail Channel Partnership purchases as these rebates cannot be attributed to individual customer accounts.

Attachment L illustrates the cumulative commercial rebate locations overlaid on a map of Bexar County and the City Council Districts. This attachment does not include Commercial & Industrial Demand Response programs, as these are demand response programs and not energy efficiency per se.

Attachment M illustrates the cumulative residential rebate locations overlaid on the various census tract income segments. This attachment does not include Smart Thermostat, Nest Direct Install, or BYOT installations, as these are demand response programs and not energy efficiency per se, nor does it include New Home Construction installations, Energy Savings Through Schools or Retail Channel Partnership purchases as these rebates cannot be attributed to individual customer accounts.

Attachment N illustrates the cumulative commercial rebate locations overlaid on the various census tract income segments. This attachment does not include Commercial & Industrial Demand Response programs, as these are demand response programs and not energy efficiency per se.



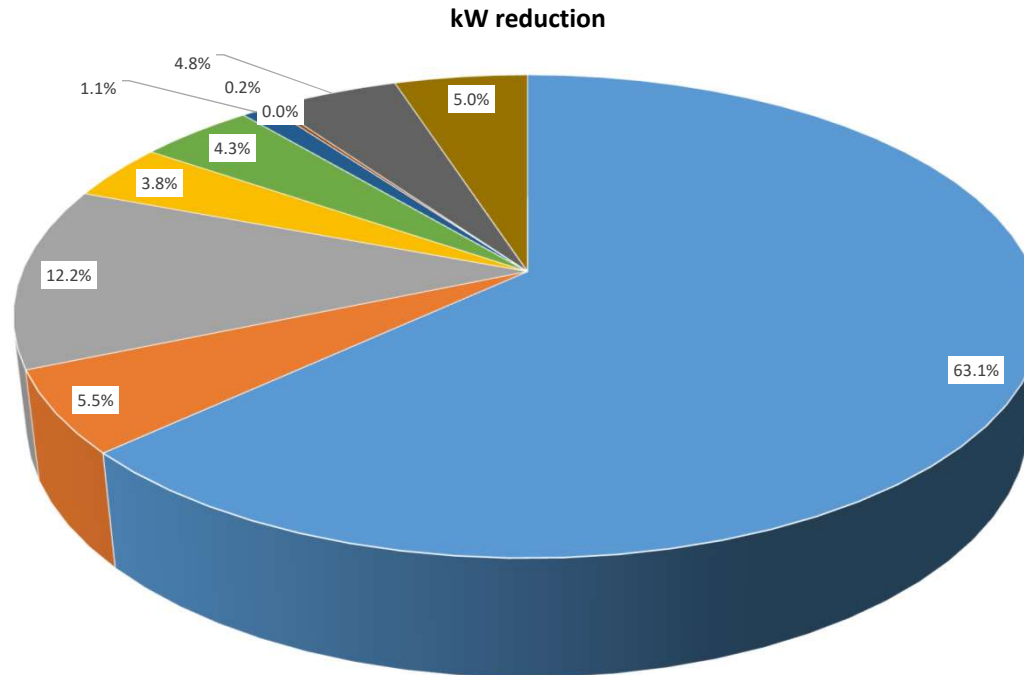
# Attachment - A

## 4th Quarter Residential Energy Efficiency & Demand Response Summary Nov 1, 2020 - Jan 31, 2021



	Res. Solar PV	Weatherization	Res. Central A/C	Res. Home Efficiency	Cool Roof	Retail Channel Partnerships	Energy Savings Through Schools	Home Energy Assessments	New Home Construction	Res. Demand Response*	Total
<b>kW reduction</b>	7,310.66	638.20	1,412.31	441.78	4.17	495.00	125.00	21.00	555.00	576.00	<b>11,579</b>
<b>Rebate Dollars</b>	\$2,280,965	\$1,507,023	\$606,573	\$152,528	\$6,856	\$184,641	\$129,406	\$34,524	\$1,273,311	\$1,834,677	<b>\$8,010,502</b>

\*Res. Demand Response includes Smart Thermostat, Nest Direct Install and BYOT programs



- Res. Solar PV - 63.1%
- Res. Home Efficiency - 3.8%
- Energy Savings Through Schools - 1.1%
- Res. Demand Response\* - 5.0%
- Weatherization - 5.5%
- Cool Roof - 0.0%
- Home Energy Assessments - 0.2%
- Res. Central A/C - 12.2%
- Retail Channel Partnerships - 4.3%
- New Home Construction - 4.8%

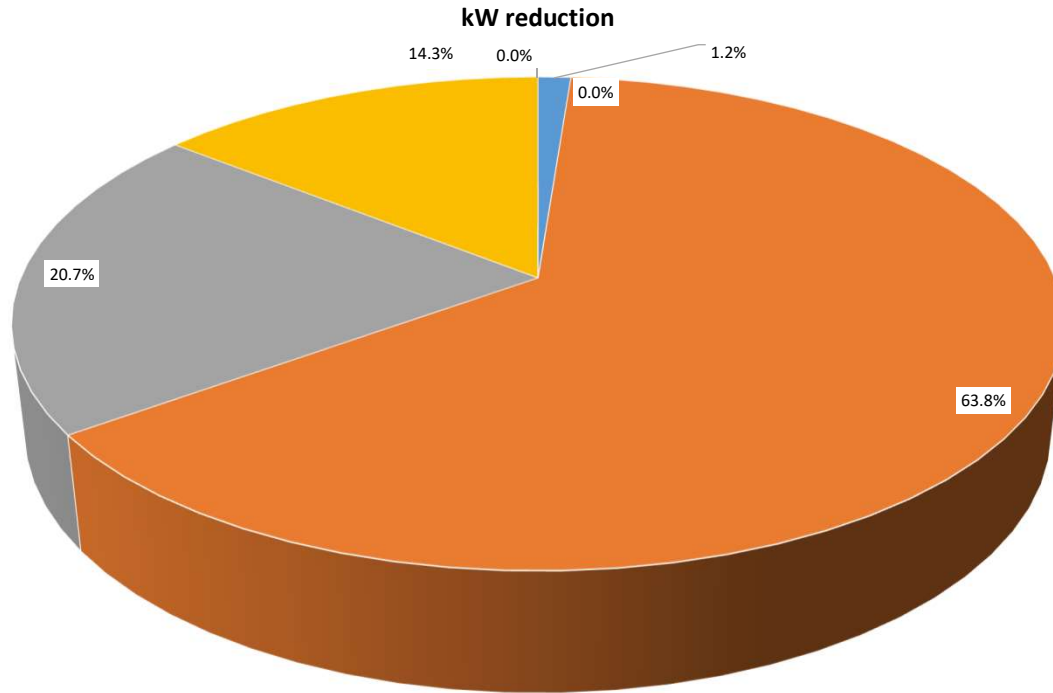
RESULTS HAVE NOT BEEN AUDITED. FINANCIAL INFORMATION CONTAINED WITHIN THE STEP QUARTERLY REPORT SOLELY REFLECTS THE DIRECT PROGRAM EXPENDITURES ALLOCATED IN ACCORDANCE WITH CPS ENERGY CUSTOMER DEMAND. THIS FINANCIAL INFORMATION IS ONLY A PORTION OF THE TOTAL STEP EXPENDITURES. ACTUAL STEP EXPENDITURES, CONFIRMED BY AN INDEPENDENT THIRD-PARTY, ARE STATED WITHIN THE ANNUAL STEP MEASUREMENT AND VERIFICATION (M&V) REPORT. THE INFORMATION AND DATA PROVIDED ON THE REPORT ARE PROVIDED FOR REFERENCE PURPOSES ONLY AND ARE PROVIDED TO THE USER OF THIS REPORT "AS IS" WITHOUT ANY WARRANTIES OF ANY TYPE, EXPRESS OR IMPLIED.

Attachment - B

4th Quarter  
Commercial Energy Efficiency & Demand Response Summary  
Nov 1, 2020 - Jan 31, 2021



	Comm. Solar PV	C&I Solutions	Schools & Institutions	Small Business Solutions	Whole Building Optimization	C&I Demand Response	Total
<b>kW reduction</b>	44.90	2,316.18	750.37	518.39	0.00	0.00	<b>3,630</b>
<b>Rebate Dollars</b>	\$41,439	\$1,102,575	\$346,328	\$284,508	\$0	\$5,580,875	<b>\$7,355,725</b>



- Comm. Solar PV - 1.2%
- C&I Solutions - 63.8%
- Schools & Institutions - 20.7%
- Small Business Solutions - 14.3%
- Whole Building Optimization - 0.0%
- C&I Demand Response - 0.0%

RESULTS HAVE NOT BEEN AUDITED. FINANCIAL INFORMATION CONTAINED WITHIN THE STEP QUARTERLY REPORT SOLELY REFLECTS THE DIRECT PROGRAM EXPENDITURES ALLOCATED IN ACCORDANCE WITH CPS ENERGY CUSTOMER DEMAND. THIS FINANCIAL INFORMATION IS ONLY A PORTION OF THE TOTAL STEP EXPENDITURES. ACTUAL STEP EXPENDITURES, CONFIRMED BY AN INDEPENDENT THIRD-PARTY, ARE STATED WITHIN THE ANNUAL STEP MEASUREMENT AND VERIFICATION (M&V) REPORT. THE INFORMATION AND DATA PROVIDED ON THE REPORT ARE PROVIDED FOR REFERENCE PURPOSES ONLY AND ARE PROVIDED TO THE USER OF THIS REPORT "AS IS" WITHOUT ANY WARRANTIES OF ANY TYPE, EXPRESS OR IMPLIED.

# Attachment - C

4th Quarter  
Nov 1, 2020 - Jan 31, 2021

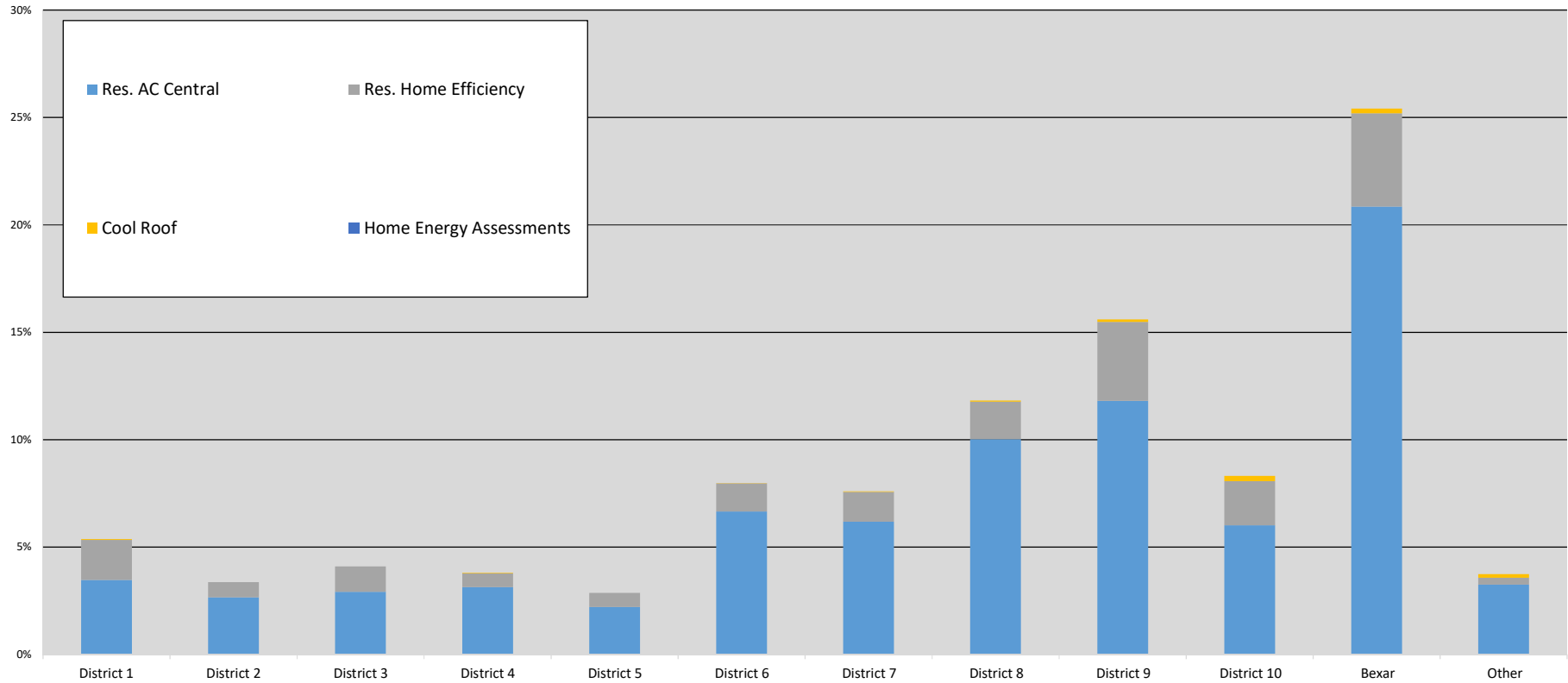


## Residential Rebates \$ by Council District

Rebate Dollars (\$)													
	District 1	District 2	District 3	District 4	District 5	District 6	District 7	District 8	District 9	District 10	Bexar	Other	Total
Res. AC Central	\$ 26,600	\$ 20,383	\$ 22,345	\$ 24,063	\$ 16,898	\$ 50,993	\$ 47,368	\$ 76,753	\$ 90,408	\$ 46,150	\$ 159,673	\$ 24,943	\$ 606,573
Res. Home Efficiency	\$ 14,237	\$ 5,417	\$ 9,104	\$ 4,859	\$ 5,096	\$ 10,025	\$ 10,602	\$ 13,419	\$ 28,255	\$ 15,706	\$ 33,368	\$ 2,440	\$ 152,528
Cool Roof	\$ 274	\$ -	\$ -	\$ 244	\$ -	\$ 108	\$ 244	\$ 404	\$ 777	\$ 1,869	\$ 1,627	\$ 1,310	\$ 6,856
Home Energy Assessments*	\$ -	\$ -	\$ -	\$ -	\$ -	\$ -	\$ -	\$ -	\$ -	\$ -	\$ -	\$ -	\$ -
<b>Residential Rebates (\$) by Council District w/o Solar &amp; Weatherization</b>	<b>\$ 41,111</b>	<b>\$ 25,799</b>	<b>\$ 31,449</b>	<b>\$ 29,165</b>	<b>\$ 21,993</b>	<b>\$ 61,125</b>	<b>\$ 58,213</b>	<b>\$ 90,576</b>	<b>\$ 119,439</b>	<b>\$ 63,725</b>	<b>\$ 194,667</b>	<b>\$ 28,693</b>	<b>\$ 765,956</b>
Res. Solar PV	\$ 78,500	\$ 216,320	\$ 95,000	\$ 201,750	\$ 37,500	\$ 130,750	\$ 74,500	\$ 86,980	\$ 83,250	\$ 122,000	\$ 1,106,415	\$ 48,000	\$ 2,280,965
Weatherization*	\$ 140,974	\$ 279,065	\$ 256,362	\$ 150,201	\$ 265,846	\$ 112,996	\$ 142,121	\$ 13,399	\$ -	\$ 42,154	\$ 103,905	\$ -	\$ 1,507,023
<b>Total</b>	<b>\$ 260,585</b>	<b>\$ 521,184</b>	<b>\$ 382,812</b>	<b>\$ 381,116</b>	<b>\$ 325,339</b>	<b>\$ 304,871</b>	<b>\$ 274,835</b>	<b>\$ 190,954</b>	<b>\$ 202,689</b>	<b>\$ 227,879</b>	<b>\$ 1,404,987</b>	<b>\$ 76,693</b>	<b>\$ 4,553,943</b>

\*Home Energy Assessments and Weatherization dollars include only the installation cost of measures in the home

## Residential Rebates (\$) by Council District w/o Solar & Weatherization



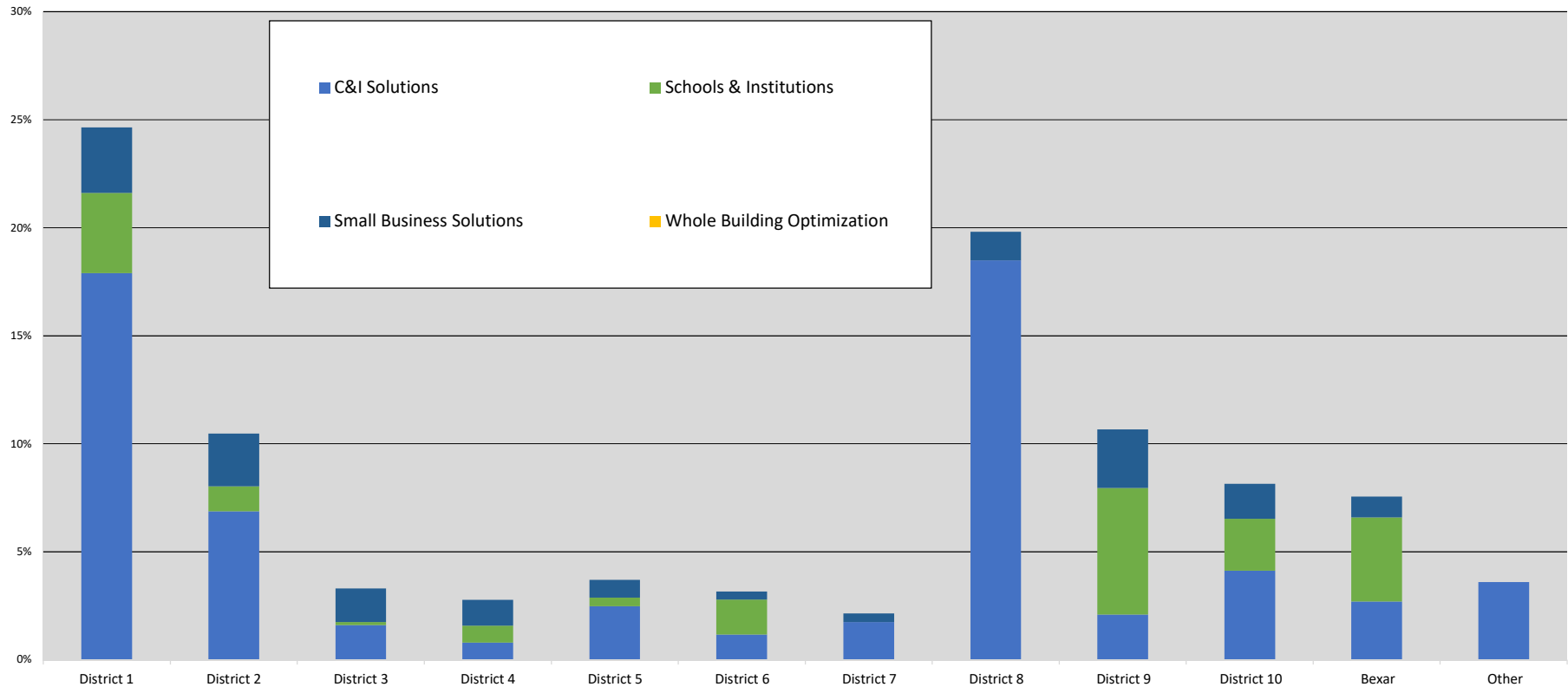
# Attachment - D

## 4th Quarter Nov 1, 2020 - Jan 31, 2021 Commercial Rebates \$ by Council District



Rebate Dollars (\$)													
	District 1	District 2	District 3	District 4	District 5	District 6	District 7	District 8	District 9	District 10	Bexar	Other	Total
C&I Solutions	\$ 310,220	\$ 119,212	\$ 27,866	\$ 13,844	\$ 43,087	\$ 20,339	\$ 30,426	\$ 320,500	\$ 36,295	\$ 71,531	\$ 46,850	\$ 62,405	\$ 1,102,575
Schools & Institutions	\$ 64,410	\$ 20,056	\$ 2,454	\$ 13,647	\$ 6,924	\$ 28,022	\$ -	\$ -	\$ 101,651	\$ 41,609	\$ 67,555	\$ -	\$ 346,328
Small Business Solutions	\$ 52,674	\$ 42,269	\$ 26,901	\$ 20,609	\$ 14,069	\$ 6,336	\$ 6,770	\$ 23,111	\$ 47,050	\$ 28,204	\$ 16,517	\$ -	\$ 284,508
Whole Building Optimization	\$ -	\$ -	\$ -	\$ -	\$ -	\$ -	\$ -	\$ -	\$ -	\$ -	\$ -	\$ -	\$ -
Commercial Rebates (\$) by Council District w/o Solar	\$ 427,304	\$ 181,537	\$ 57,221	\$ 48,099	\$ 64,080	\$ 54,697	\$ 37,196	\$ 343,611	\$ 184,995	\$ 141,344	\$ 130,921	\$ 62,405	\$ 1,733,411
Comm. Solar PV	\$ 6,210	\$ -	\$ -	\$ -	\$ -	\$ -	\$ -	\$ -	\$ -	\$ -	\$ -	\$ 35,229	\$ 41,439
<b>Total</b>	<b>\$ 433,514</b>	<b>\$ 181,537</b>	<b>\$ 57,221</b>	<b>\$ 48,099</b>	<b>\$ 64,080</b>	<b>\$ 54,697</b>	<b>\$ 37,196</b>	<b>\$ 343,611</b>	<b>\$ 184,995</b>	<b>\$ 141,344</b>	<b>\$ 130,921</b>	<b>\$ 97,634</b>	<b>\$ 1,774,850</b>

### Commercial Rebates (\$) by Council District w/o Solar



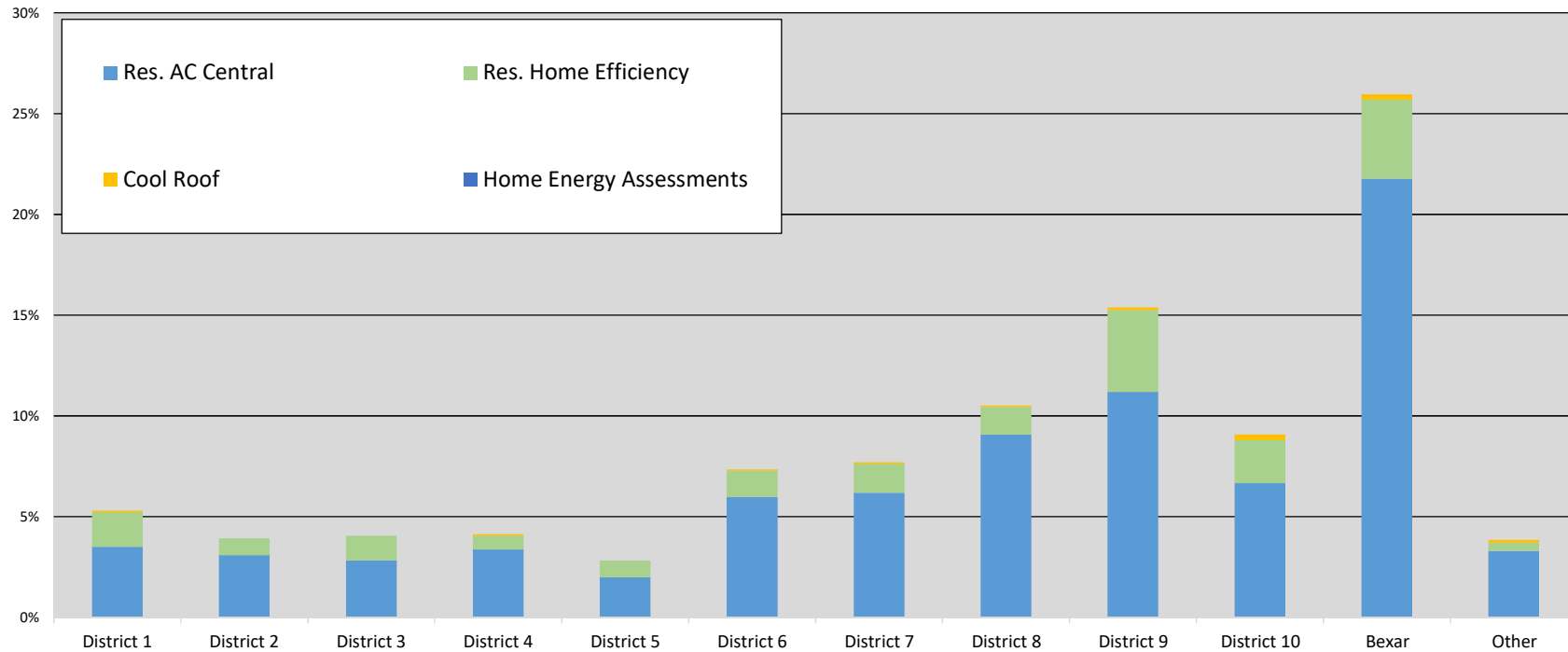
# Attachment - E

## 4th Quarter Residential Rebates by Council District Summary Nov 1, 2020 - Jan 31, 2021



	District 1	District 2	District 3	District 4	District 5	District 6	District 7	District 8	District 9	District 10	Bexar	Other Counties	Total
Res. AC Central	51	45	41	49	29	87	90	132	163	97	317	48	1,149
Res. Home Efficiency	25	12	18	10	12	19	21	20	59	31	57	6	290
Cool Roof	1	0	0	1	0	1	1	1	2	4	4	2	17
Home Energy Assessments	0	0	0	0	0	0	0	0	0	0	0	0	0
<b>Residential Rebates per Council District w/o Solar &amp; Weatherization</b>	<b>77</b>	<b>57</b>	<b>59</b>	<b>60</b>	<b>41</b>	<b>107</b>	<b>112</b>	<b>153</b>	<b>224</b>	<b>132</b>	<b>378</b>	<b>56</b>	<b>1,456</b>
Res. Solar PV	29	81	35	73	13	48	28	34	33	46	424	19	863
Weatherization	30	69	50	43	55	26	26	6	0	12	32	0	349
<b>Total</b>	<b>136</b>	<b>207</b>	<b>144</b>	<b>176</b>	<b>109</b>	<b>181</b>	<b>166</b>	<b>193</b>	<b>257</b>	<b>190</b>	<b>834</b>	<b>75</b>	<b>2,668</b>

### Residential Rebates per Council District w/o Solar & Weatherization



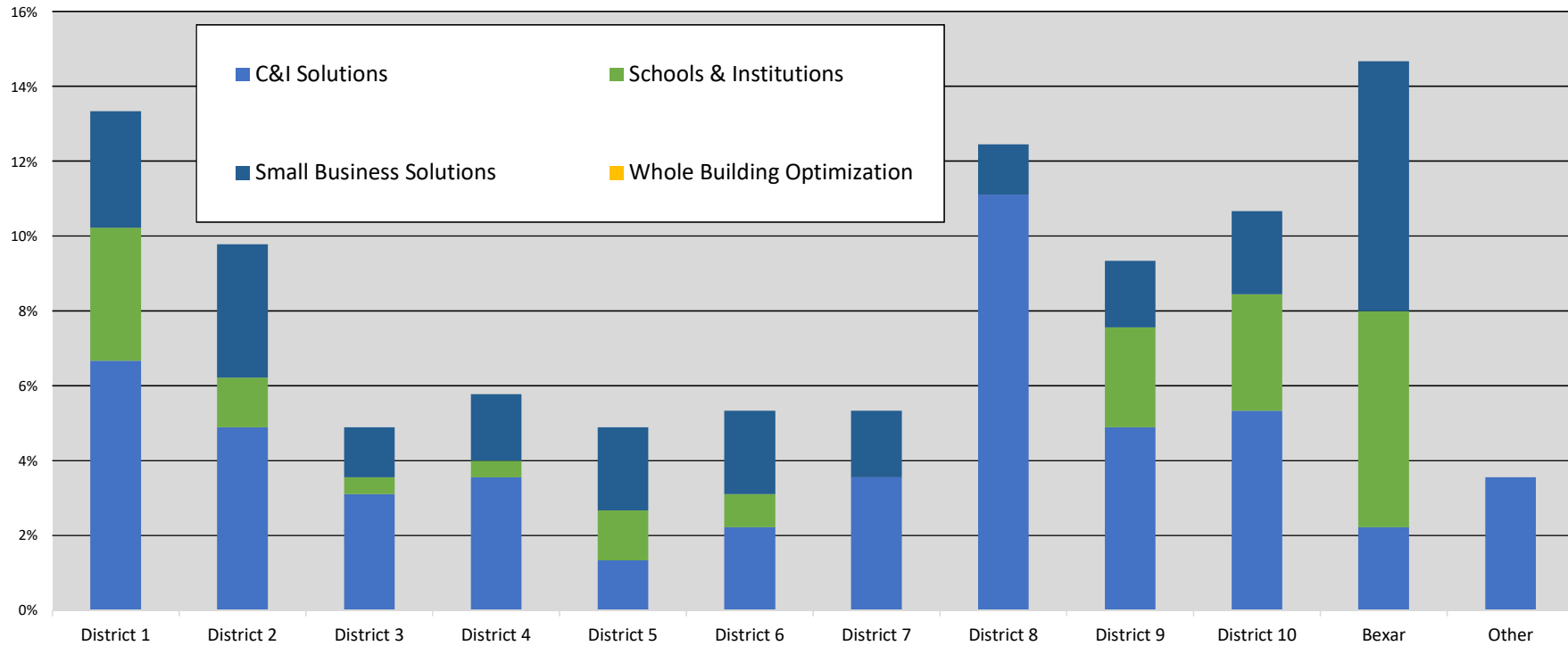
# Attachment - F

## 4th Quarter Commercial Rebates by Council District Summary Nov 1, 2020 - Jan 31, 2021



	District 1	District 2	District 3	District 4	District 5	District 6	District 7	District 8	District 9	District 10	Bexar	Other Counties	Total
C&I Solutions	15	11	7	8	3	5	8	25	11	12	5	8	118
Schools & Institutions	8	3	1	1	3	2	0	0	6	7	13	0	44
Small Business Solutions	7	8	3	4	5	5	4	3	4	5	15	0	63
Whole Building Optimization	0	0	0	0	0	0	0	0	0	0	0	0	0
Commercial Rebates per Council District w/o Solar	30	22	11	13	11	12	12	28	21	24	33	8	225
Comm. Solar PV	2	0	0	0	0	0	0	0	0	0	0	3	5
<b>Total</b>	<b>32</b>	<b>22</b>	<b>11</b>	<b>13</b>	<b>11</b>	<b>12</b>	<b>12</b>	<b>28</b>	<b>21</b>	<b>24</b>	<b>33</b>	<b>11</b>	<b>230</b>

### Commercial Rebates per Council District w/o Solar



# Attachment - G

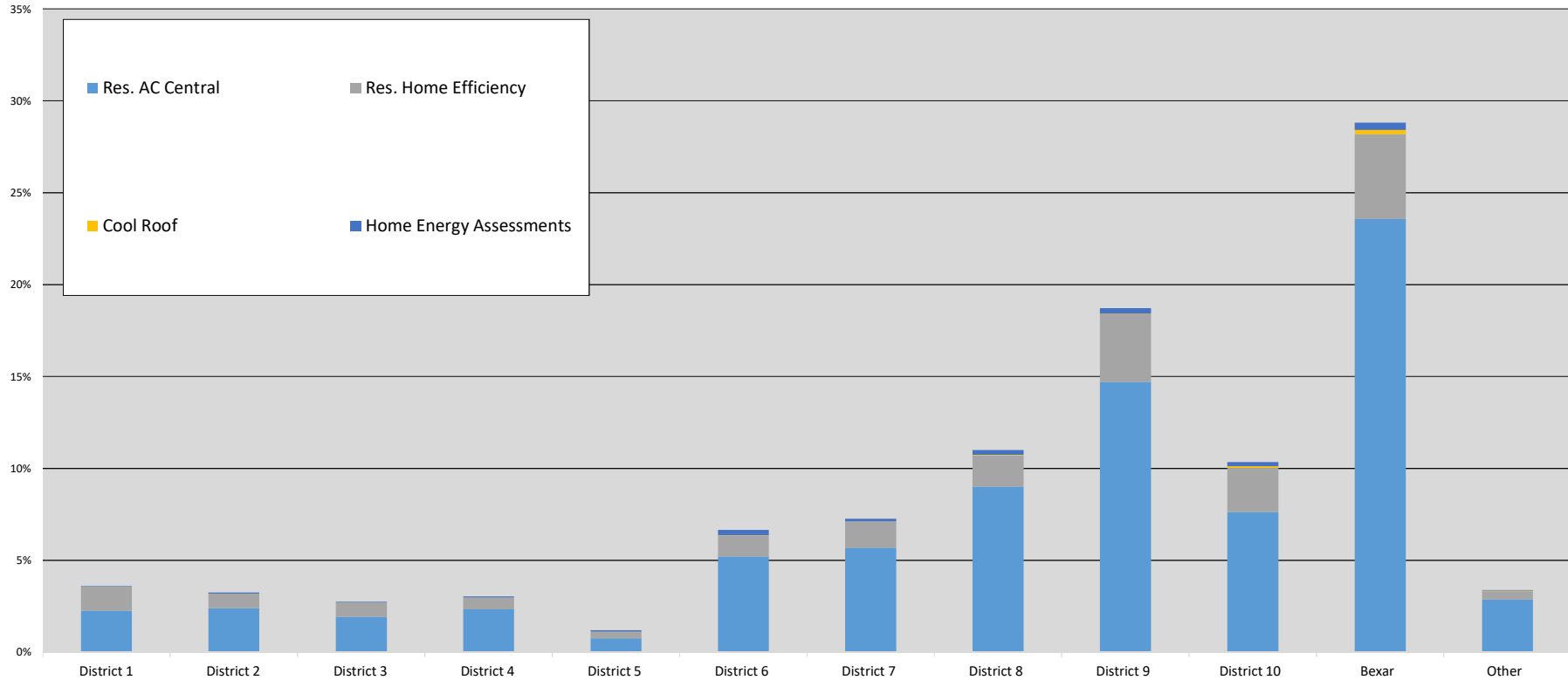
## Cumulative Feb 1, 2020 - Jan 31, 2021 Residential Rebates \$ by Council District



Rebate Dollars (\$)													
	District 1	District 2	District 3	District 4	District 5	District 6	District 7	District 8	District 9	District 10	Bexar	Other	Total
Res. AC Central	\$ 97,086	\$ 102,819	\$ 82,997	\$ 100,069	\$ 32,556	\$ 223,214	\$ 243,488	\$ 385,950	\$ 629,983	\$ 327,003	\$ 1,009,776	\$ 123,181	\$ 3,358,118
Res. Home Efficiency	\$ 54,586	\$ 32,479	\$ 33,513	\$ 27,196	\$ 15,413	\$ 49,295	\$ 61,879	\$ 73,024	\$ 157,572	\$ 102,562	\$ 197,783	\$ 19,471	\$ 824,774
Cool Roof	\$ 591	\$ 788	\$ -	\$ 561	\$ 221	\$ 357	\$ 244	\$ 1,558	\$ 2,170	\$ 4,346	\$ 9,984	\$ 1,310	\$ 22,129
Home Energy Assessments*	\$ 2,442	\$ 2,986	\$ 1,389	\$ 2,405	\$ 2,793	\$ 12,296	\$ 5,355	\$ 10,476	\$ 12,851	\$ 9,630	\$ 17,101	\$ 1,100	\$ 80,825
<b>Residential Rebates (\$) by Council District w/o Solar &amp; Weatherization</b>													
Res. Solar PV	\$ 334,784	\$ 916,265	\$ 434,375	\$ 852,320	\$ 148,896	\$ 722,750	\$ 464,898	\$ 538,205	\$ 572,250	\$ 624,496	\$ 4,385,916	\$ 289,189	\$ 10,284,343
Weatherization*	\$ 408,115	\$ 624,266	\$ 643,317	\$ 430,743	\$ 658,345	\$ 243,833	\$ 326,296	\$ 32,562	\$ 3,267	\$ 93,300	\$ 270,370	\$ -	\$ 3,734,414
<b>Total</b>	<b>\$ 897,604</b>	<b>\$ 1,679,602</b>	<b>\$ 1,195,591</b>	<b>\$ 1,413,292</b>	<b>\$ 858,224</b>	<b>\$ 1,251,744</b>	<b>\$ 1,102,160</b>	<b>\$ 1,041,775</b>	<b>\$ 1,378,093</b>	<b>\$ 1,161,338</b>	<b>\$ 5,890,929</b>	<b>\$ 434,250</b>	<b>\$ 18,304,602</b>

\*Home Energy Assessments and Weatherization dollars include only the installation cost of measures in the home

### Residential Rebates (\$) by Council District w/o Solar & Weatherization



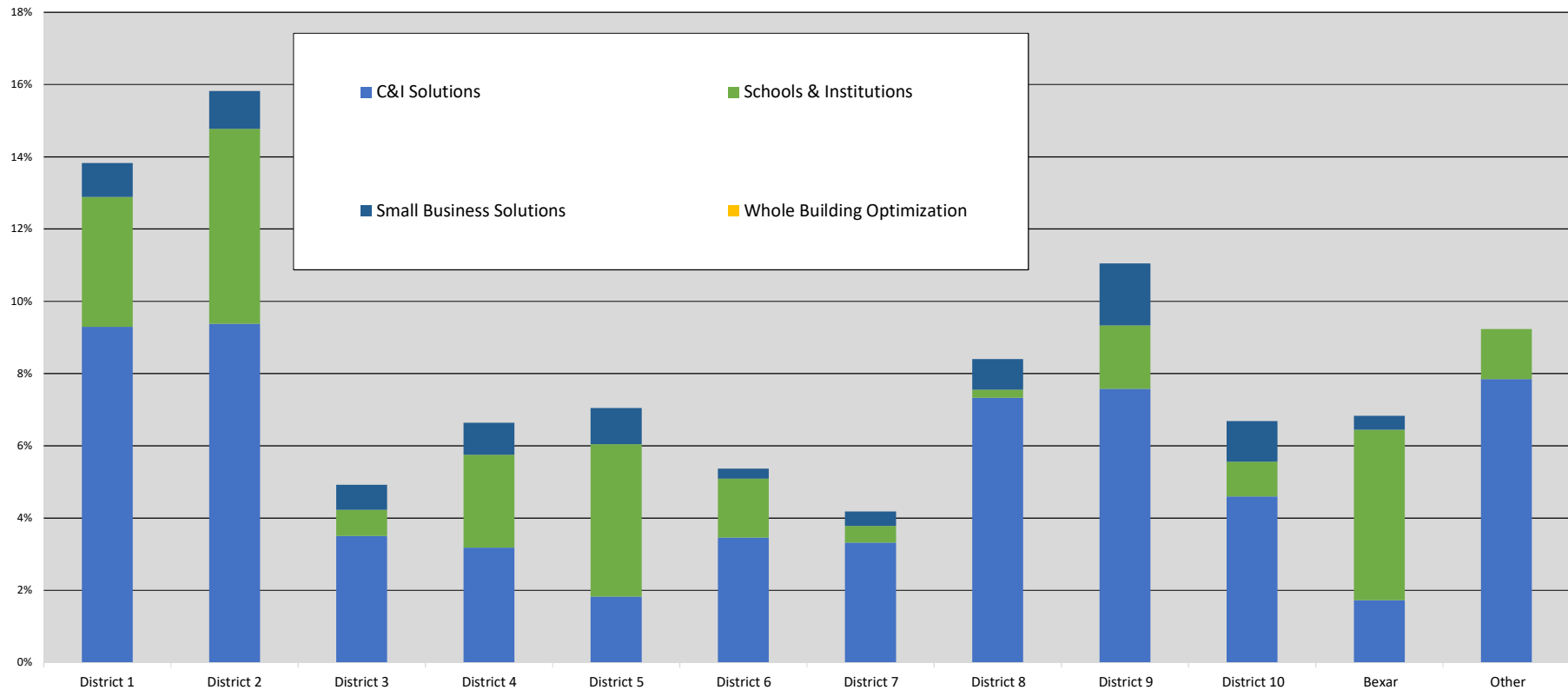
# Attachment - H

## Cumulative Feb 1, 2020 - Jan 31, 2021 Commercial Rebates \$ by Council District



Rebate Dollars (\$)													
	District 1	District 2	District 3	District 4	District 5	District 6	District 7	District 8	District 9	District 10	Bexar	Other	Total
C&I Solutions	\$ 736,327	\$ 742,583	\$ 277,906	\$ 252,159	\$ 144,668	\$ 274,304	\$ 262,908	\$ 580,672	\$ 600,313	\$ 364,153	\$ 136,574	\$ 621,916	\$ 4,994,483
Schools & Institutions	\$ 284,844	\$ 427,550	\$ 57,095	\$ 203,500	\$ 334,273	\$ 129,001	\$ 36,754	\$ 17,700	\$ 138,693	\$ 76,415	\$ 373,851	\$ 109,735	\$ 2,189,410
Small Business Solutions	\$ 74,112	\$ 83,030	\$ 54,673	\$ 70,532	\$ 79,081	\$ 21,737	\$ 31,424	\$ 67,191	\$ 135,908	\$ 88,841	\$ 30,496	\$ -	\$ 737,025
Whole Building Optimization	\$ -	\$ -	\$ -	\$ -	\$ -	\$ -	\$ -	\$ -	\$ -	\$ -	\$ -	\$ -	\$ -
Commercial Rebates (\$) by Council District w/o Solar	\$ 1,095,283	\$ 1,253,164	\$ 389,674	\$ 526,191	\$ 558,021	\$ 425,042	\$ 331,086	\$ 665,563	\$ 874,914	\$ 529,409	\$ 540,921	\$ 731,651	\$ 7,920,918
Comm. Solar PV	\$ 89,627	\$ 160,000	\$ -	\$ -	\$ -	\$ 73,663	\$ -	\$ 131,220	\$ 77,844	\$ 9,159	\$ 29,770	\$ 136,983	\$ 708,266
<b>Total</b>	<b>\$ 1,184,910</b>	<b>\$ 1,413,164</b>	<b>\$ 389,674</b>	<b>\$ 526,191</b>	<b>\$ 558,021</b>	<b>\$ 498,705</b>	<b>\$ 331,086</b>	<b>\$ 796,783</b>	<b>\$ 952,758</b>	<b>\$ 538,567</b>	<b>\$ 570,691</b>	<b>\$ 868,634</b>	<b>\$ 8,629,183</b>

### Commercial Rebates (\$) by Council District w/o Solar





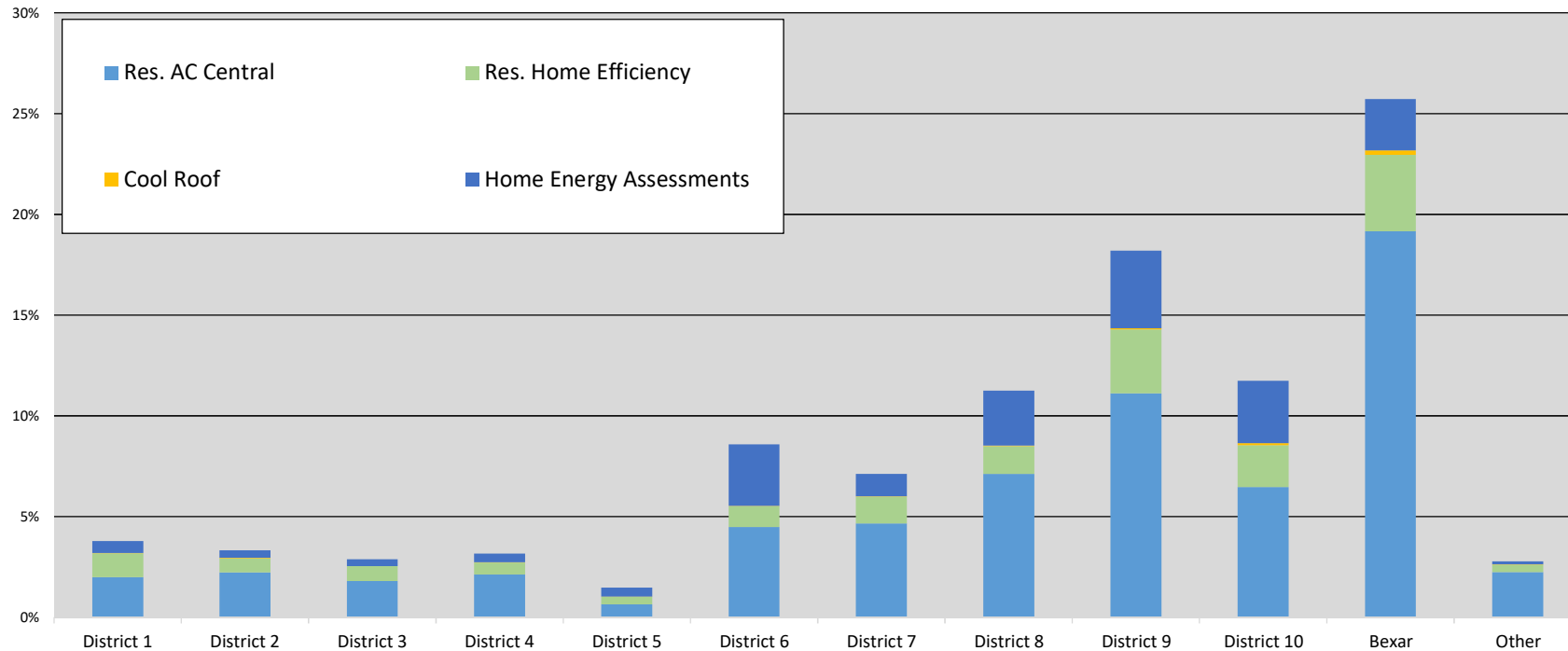
# Attachment - I

## Cumulative Residential Rebates by Council District Summary Feb 1, 2020 - Jan 31, 2021



	District 1	District 2	District 3	District 4	District 5	District 6	District 7	District 8	District 9	District 10	Bexar	Other Counties	Total
Res. AC Central	196	221	178	211	64	444	461	705	1,101	640	1,896	222	6,339
Res. Home Efficiency	119	69	73	57	37	102	133	136	314	205	376	36	1,657
Cool Roof	2	2	0	2	1	2	1	3	5	10	21	2	51
Home Energy Assessments	57	37	34	42	44	301	110	269	382	307	253	15	1,851
<b>Residential Rebates per Council District w/o Solar &amp; Weatherization</b>	<b>374</b>	<b>329</b>	<b>285</b>	<b>312</b>	<b>146</b>	<b>849</b>	<b>705</b>	<b>1,113</b>	<b>1,802</b>	<b>1,162</b>	<b>2,546</b>	<b>275</b>	<b>9,898</b>
Res. Solar PV	125	343	161	296	54	271	176	207	220	238	1,667	108	3,866
Weatherization	75	140	134	121	131	62	71	13	1	27	72	0	847
<b>Total</b>	<b>574</b>	<b>812</b>	<b>580</b>	<b>729</b>	<b>331</b>	<b>1,182</b>	<b>952</b>	<b>1,333</b>	<b>2,023</b>	<b>1,427</b>	<b>4,285</b>	<b>383</b>	<b>14,611</b>

### Residential Rebates per Council District w/o Solar & Weatherization



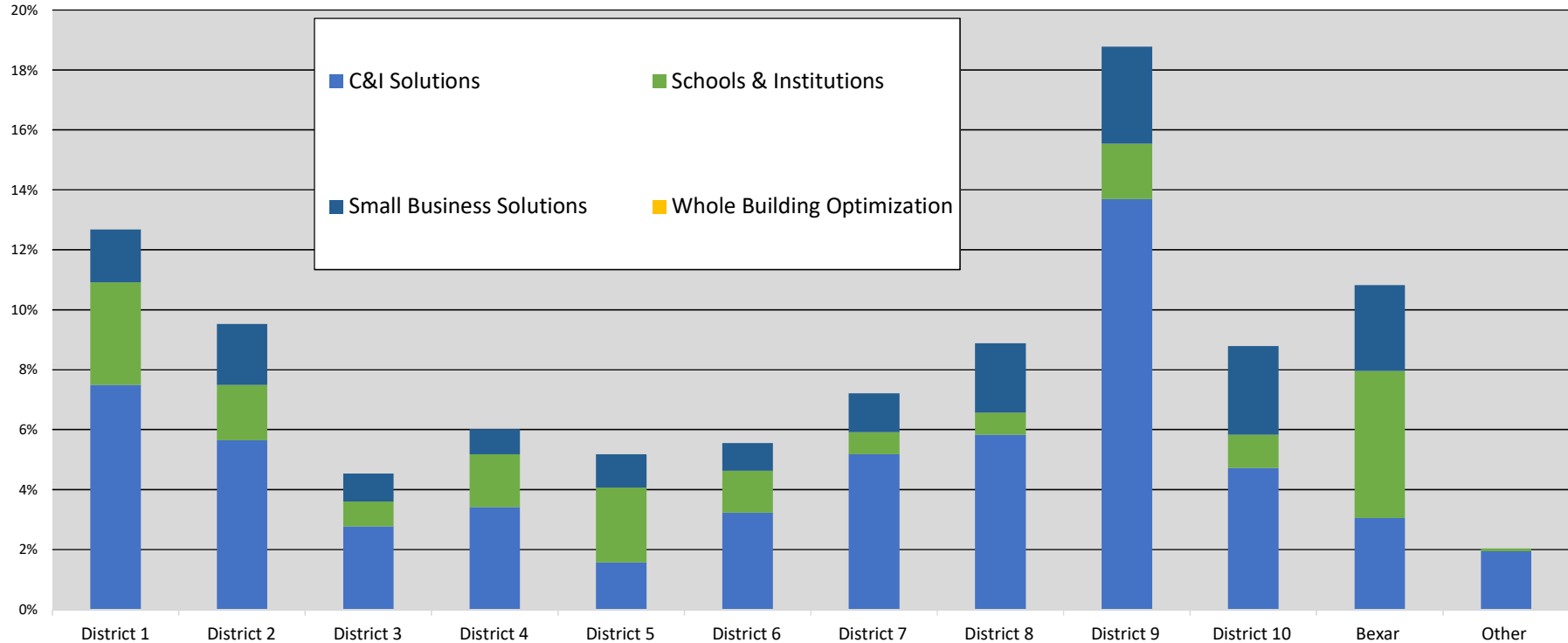
# Attachment - J

## Cumulative Commercial Rebates by Council District Summary Feb 1, 2020 - Jan 31, 2021



	District 1	District 2	District 3	District 4	District 5	District 6	District 7	District 8	District 9	District 10	Bexar	Other Counties	Total
C&I Solutions	81	61	30	37	17	35	56	63	148	51	33	21	633
Schools & Institutions	37	20	9	19	27	15	8	8	20	12	53	1	229
Small Business Solutions	19	22	10	9	12	10	14	25	35	32	31	0	219
Whole Building Optimization	0	0	0	0	0	0	0	0	0	0	0	0	0
Commercial Rebates per Council District w/o Solar	137	103	49	65	56	60	78	96	203	95	117	22	1,081
Comm. Solar PV	9	2	0	0	0	3	0	8	4	1	1	6	34
<b>Total</b>	<b>146</b>	<b>105</b>	<b>49</b>	<b>65</b>	<b>56</b>	<b>63</b>	<b>78</b>	<b>104</b>	<b>207</b>	<b>96</b>	<b>118</b>	<b>28</b>	<b>1,115</b>

### Commercial Rebates per Council District w/o Solar



# Residential Rebate Locations by Council District

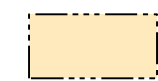
## 4th Quarter FY21

### STEP Customers











#### Comments

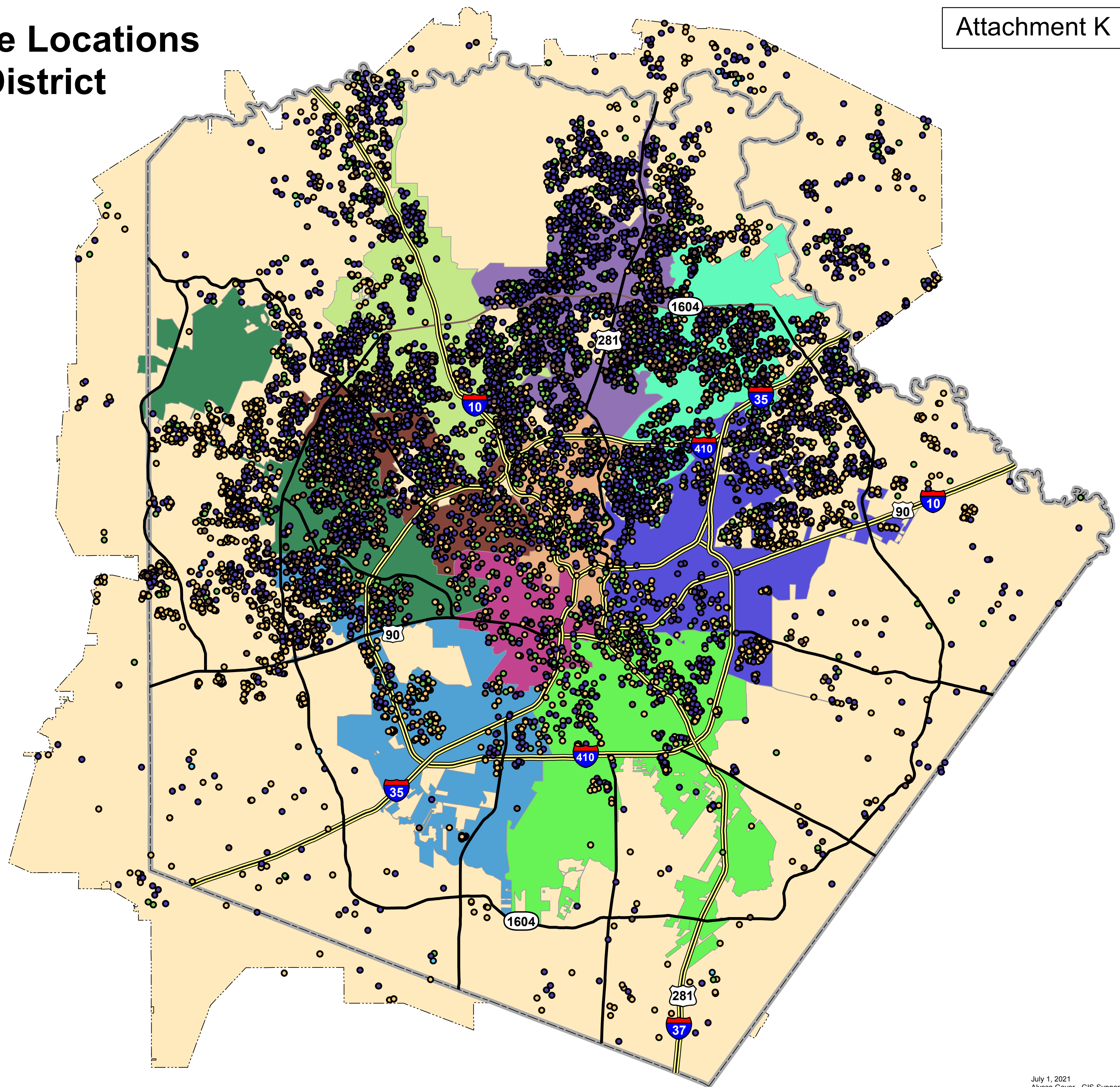
- Res Home Efficiency
- Res Central AC
- Res Cool Roof
- Home Energy Assessments
- Res Solar PV

 Bexar County Boundary

 CPS Energy Service Area

### City Council Districts

-  01
-  02
-  03
-  04
-  05
-  06
-  07
-  08
-  09
-  10



# Commercial Rebate Locations by Council District

## 4th Quarter FY21

### STEP Customers

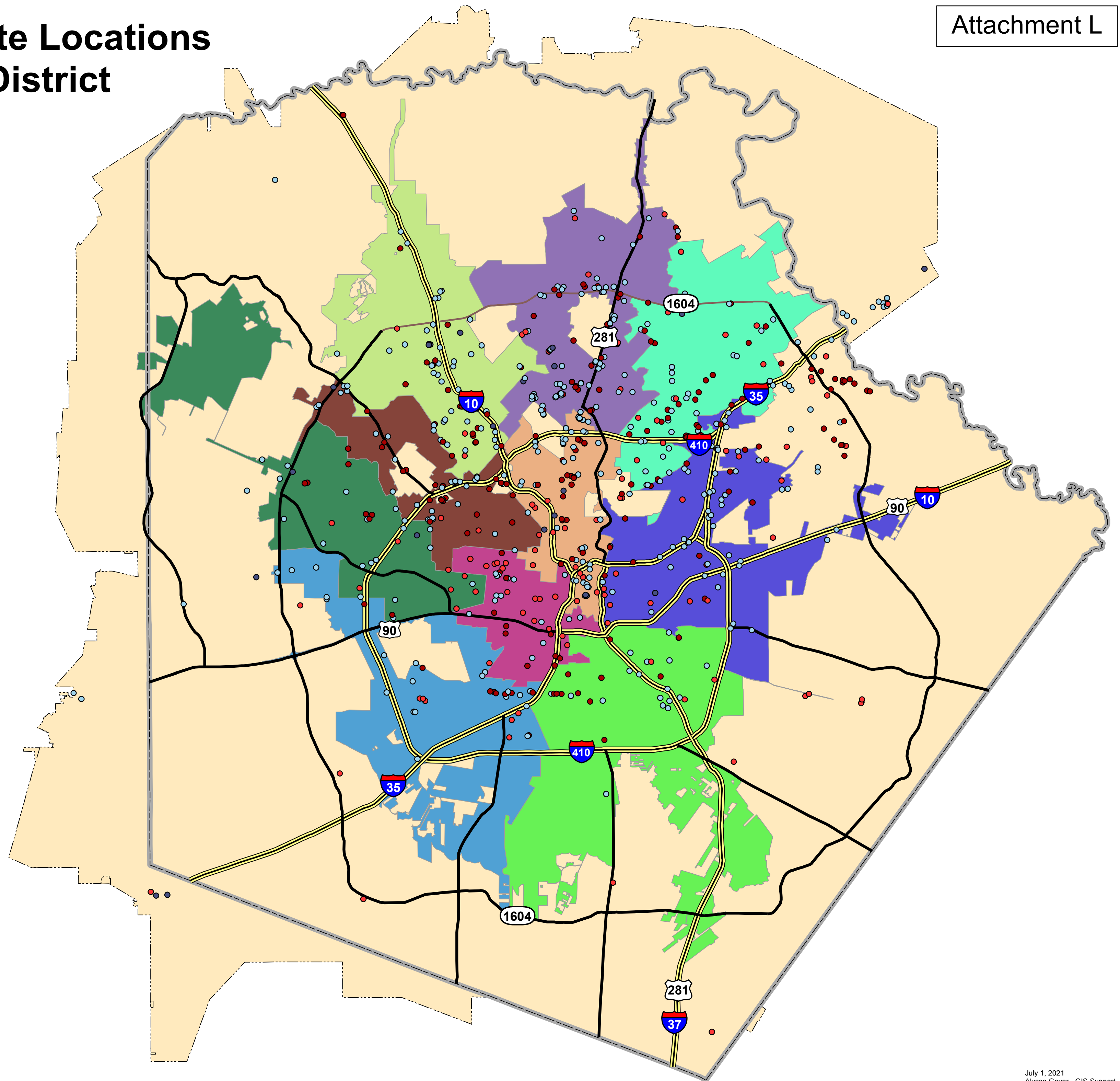
- Comm & Ind Solutions
- Comm Small Business Solutions
- Schools & Institutions
- Whole Building Optimization
- Comm Solar PV

▭ Bexar County Boundary

▭ CPS Energy Service Area

### City Council Districts

- 01
- 02
- 03
- 04
- 05
- 06
- 07
- 08
- 09
- 10



# Residential Rebate Locations by Median Income

## 4TH Quarter FY21

### STEP Customers

#### Comments







- Res Home Efficiency
- Res Central AC
- Res Cool Roof
- Home Energy Assessments
- Res Solar PV

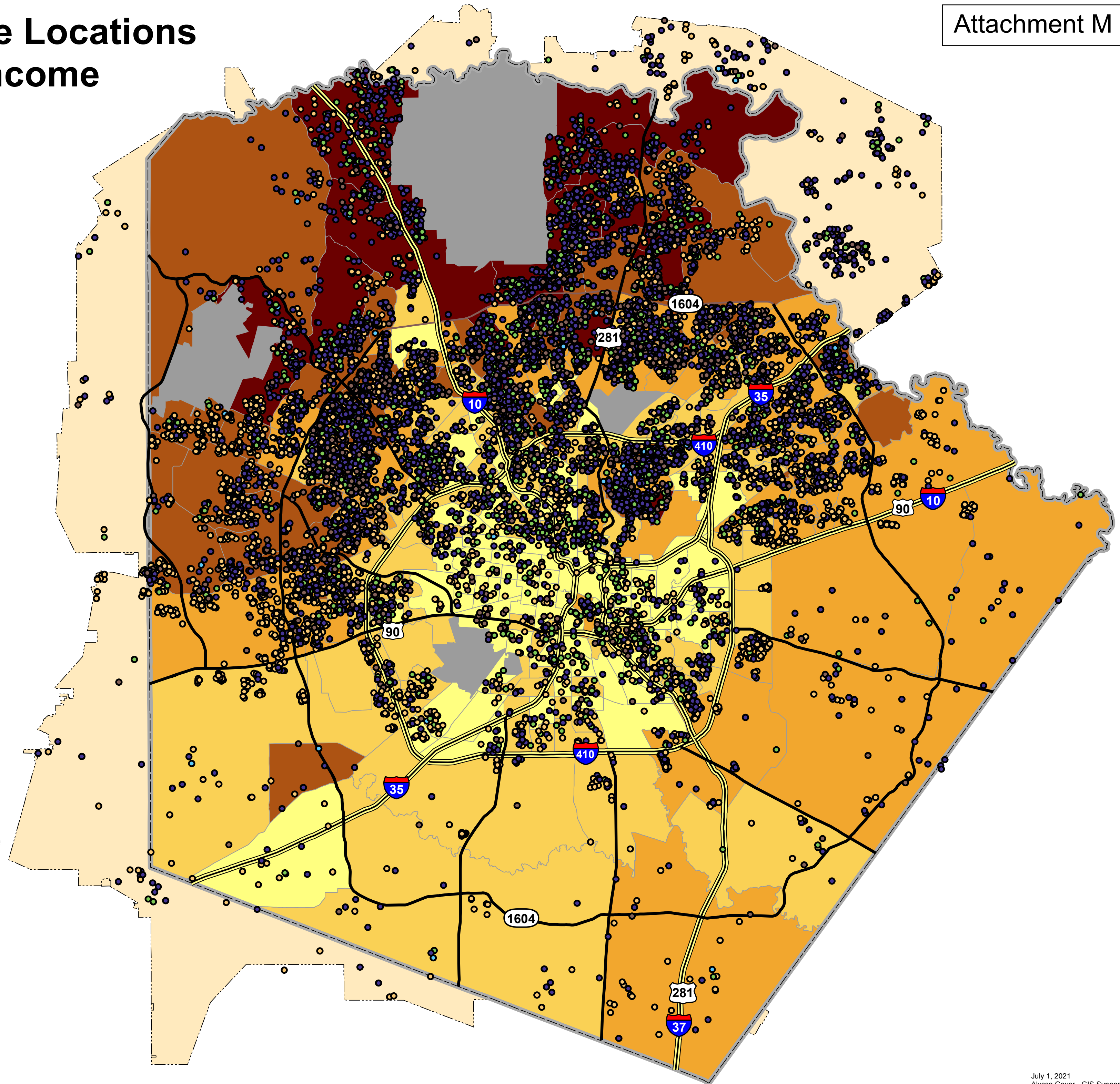
 Bexar County Boundary

 CPS Energy Service Area

### Bexar County Median Income

Source: ACS Census 2011 5yr

-  10,000 - 30,000
-  30,000 - 50,000
-  50,000 - 70,000
-  70,000 - 100,000
-  100,000 - 200,000+
-  No Data



# Commercial Rebate Locations by Median Income

4th Quarter FY21

### STEP Customers

- Comm & Ind Solutions
- Comm Small Business Solutions
- Schools & Institutions
- Whole Building Optimization
- Comm Solar PV

- ▭ Bexar County Boundary
- ▭ CPS Energy Service Area

### Bexar County Median Income

Source: ACS Census 2011 5yr

- 10,000 - 30,000
- 30,000 - 50,000
- 50,000 - 70,000
- 70,000 - 100,000
- 100,000 - 200,000+
- No Data

