

Who is CPS Energy?

Established in 1860, CPS Energy is the nation's largest community-owned provider of electric and natural gas services. We provide safe, reliable, and competitively priced services to **930,114** electric and **381,379** natural gas customers in San Antonio and portions of seven adjoining counties. Our customers' combined energy bills rank among the lowest of the nation's 20 largest cities while generating \$9 billion in revenue for the City of San Antonio over the last 80 years.

Our Vision 2027 strategic plan is designed to guide CPS Energy through rapid transformational change in our city. As a trusted and reliable community partner, we continuously focus on job creation, economic development, and educational investment. We are powered by our skilled workforce, whose commitment to the community is demonstrated through our employees' volunteerism, our community engagement efforts and programs aimed at bringing value and assistance to our customers.

For more information, visit cpsenergy.com.



How can you follow the progress of this project?

The CPS Energy project team will post project information on the CPS Energy website at cpsenergy.com/infrastructure.

Who can answer your questions?

The website will include regular updates on the project as steps are completed.

Also, you may write, call or email to:

CPS Energy

Antonio Demendonca, Project Manager

Ranchtown to Talley Road

Transmission Line Project

Mail Code RT0801

500 McCullough Ave.

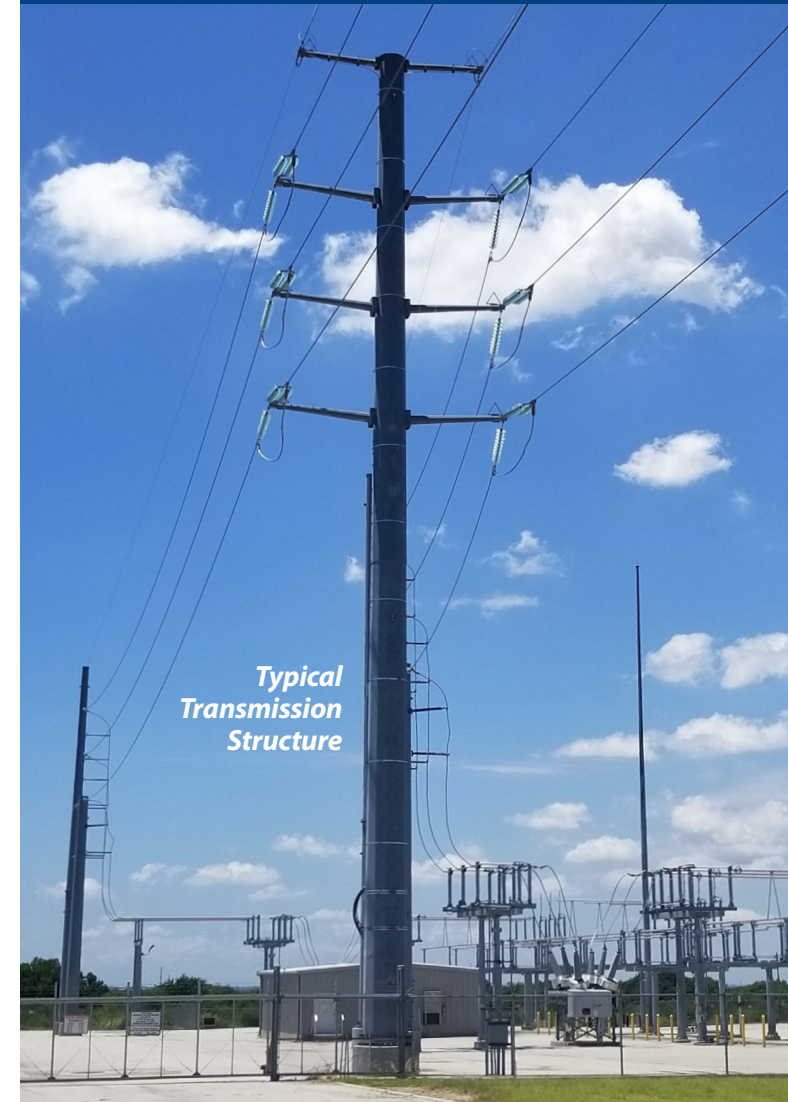
San Antonio, Texas 78215

(210) 353-6673

Ranchtown-TalleyProject@CPSEnergy.com



RANCHTOWN TO TALLEY ROAD TRANSMISSION LINE PROJECT



Typical
Transmission
Structure

INFORMATION ABOUT THE RANCHTOWN TO TALLEY ROAD TRANSMISSION PROJECT

What is the Ranchtown to Talley Road Transmission Project?

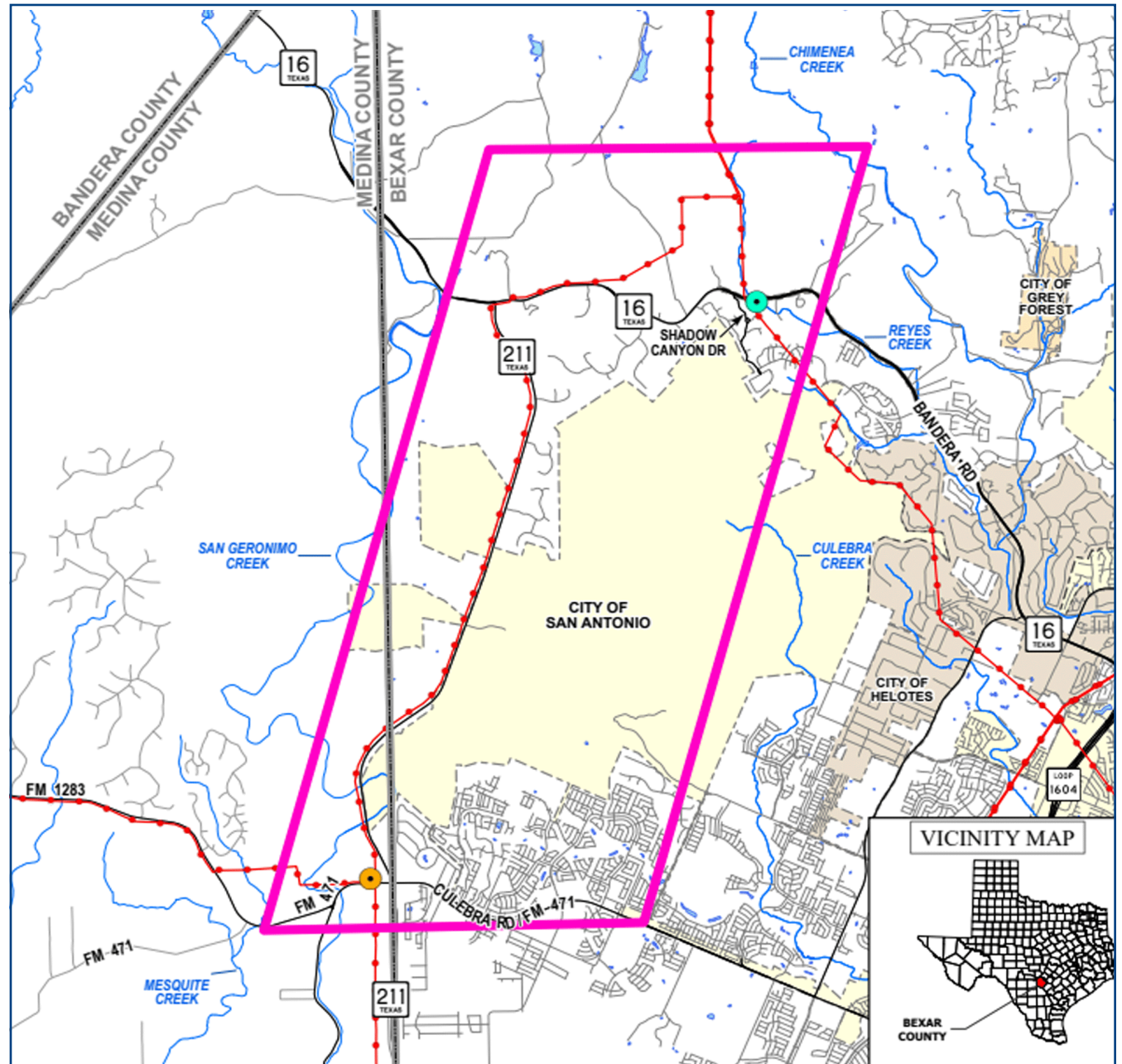
The project involves the proposed installation of a new 138 kilovolt (kV) transmission line. A significant portion of the project (10.8 miles) will involve installation of the new line on a vacant position on existing structures. A portion of the project (1.3 miles) will involve the rebuilding of existing single circuit transmission facilities for double circuit operation for the new line. In total, the project will consist of 12.1 miles of new transmission line connecting the existing Ranchtown and Talley Road substations.

How might this project affect you?

For 10.8 miles of the project, CPS Energy will install the new transmission line on a vacant position of the existing CPS Energy transmission line structures. No additional new permanent right of way will be needed in this portion of the project. For the remaining 1.3 miles of the project, CPS Energy anticipates purchasing additional property rights from property owners to expand the current right of way for the existing single circuit towers that is necessary to safely construct and operate double circuit poles along the same corridor to accommodate the project facilities.

Why is this project needed?

The new transmission line is necessary to support the accelerating growth in San Antonio. It will also increase the reliability of Texas' electric grid by adding another path for electric transmission.



Study Area Map