

Who is CPS Energy?

Established in 1860, CPS Energy is the nation's largest community-owned provider of electric and natural gas services. We provide safe, reliable, and competitively priced services to **950,129** electric and **389,116** natural gas customers in San Antonio and portions of seven adjoining counties. Our customers' combined energy bills rank among the lowest of the nation's 20 largest cities while generating \$9 billion in revenue for the City of San Antonio over the last 80 years.

Our Vision 2027 strategic plan is designed to guide CPS Energy through rapid transformational change in our city. As a trusted and reliable community partner, we continuously focus on job creation, economic development, and educational investment. We are powered by our skilled workforce, whose commitment to the community is demonstrated through our employees' volunteerism, our community engagement efforts and programs aimed at bringing value and assistance to our customers.

For more information, visit cpsenergy.com.



How can you follow the progress of this project?

The CPS Energy project team will post project information on the CPS Energy website at cpsenergy.com/infrastructure.

Who can answer your questions?

The website will include regular updates on the project as steps are completed.

Also, you may write, call or email to:

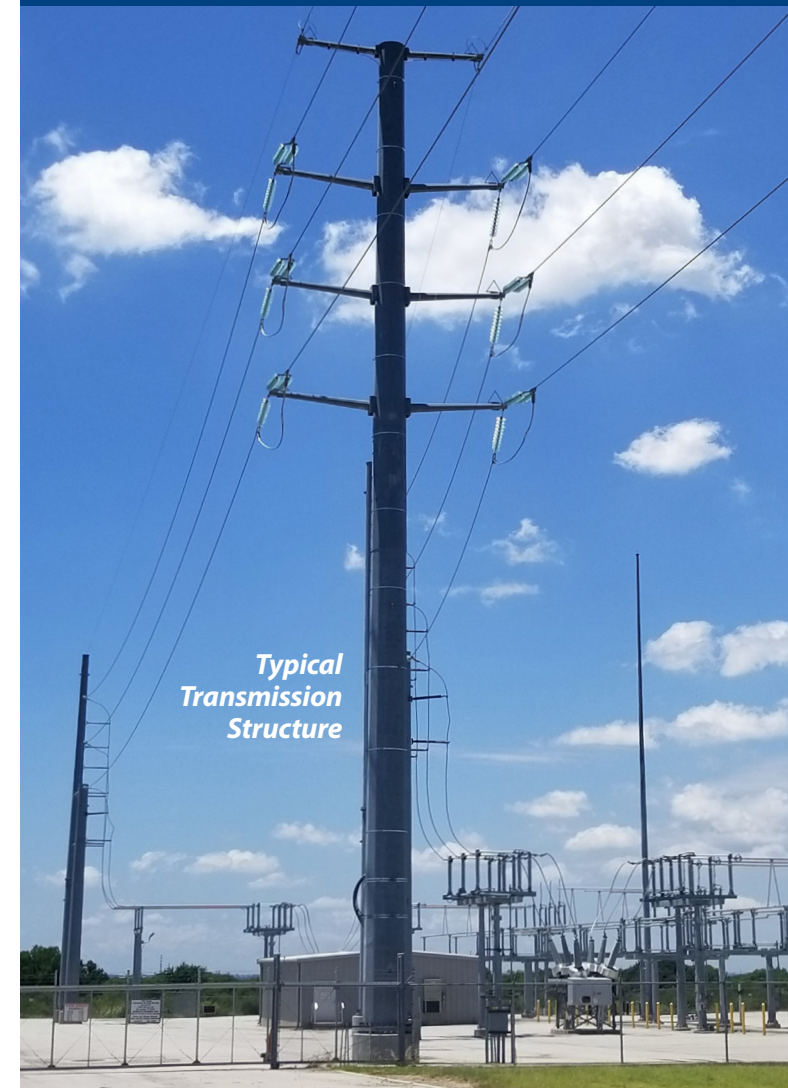
CPS Energy

Oscar Luevanos, Project Manager II
Howard Road to Leon Creek Ph. I
Transmission Line Project
Mail Code RT0801
500 McCullough Ave.
San Antonio, Texas 78215
(210) 353-4504
OLuevanos@CPSEnergy.com



HOWARD ROAD TO LEON CREEK PHASE 1 REBUILD

TRANSMISSION LINE PROJECT



Typical
Transmission
Structure

INFORMATION ABOUT THE HOWARD ROAD TO LEON CREEK PH. I TRANSMISSION LINE PROJECT

What is the Howard Road to Leon Creek Ph. I Transmission Project?

The transmission project consists of rebuilding a single circuit of 138kV transmission lines from SH-16 to Loop 410.

It involves completely removing and rebuilding the transmission line, including foundations, adding new transmission structures (poles) and electrical wires. The existing lattice (webbed) structures will be replaced with steel poles.

How might this project affect you?

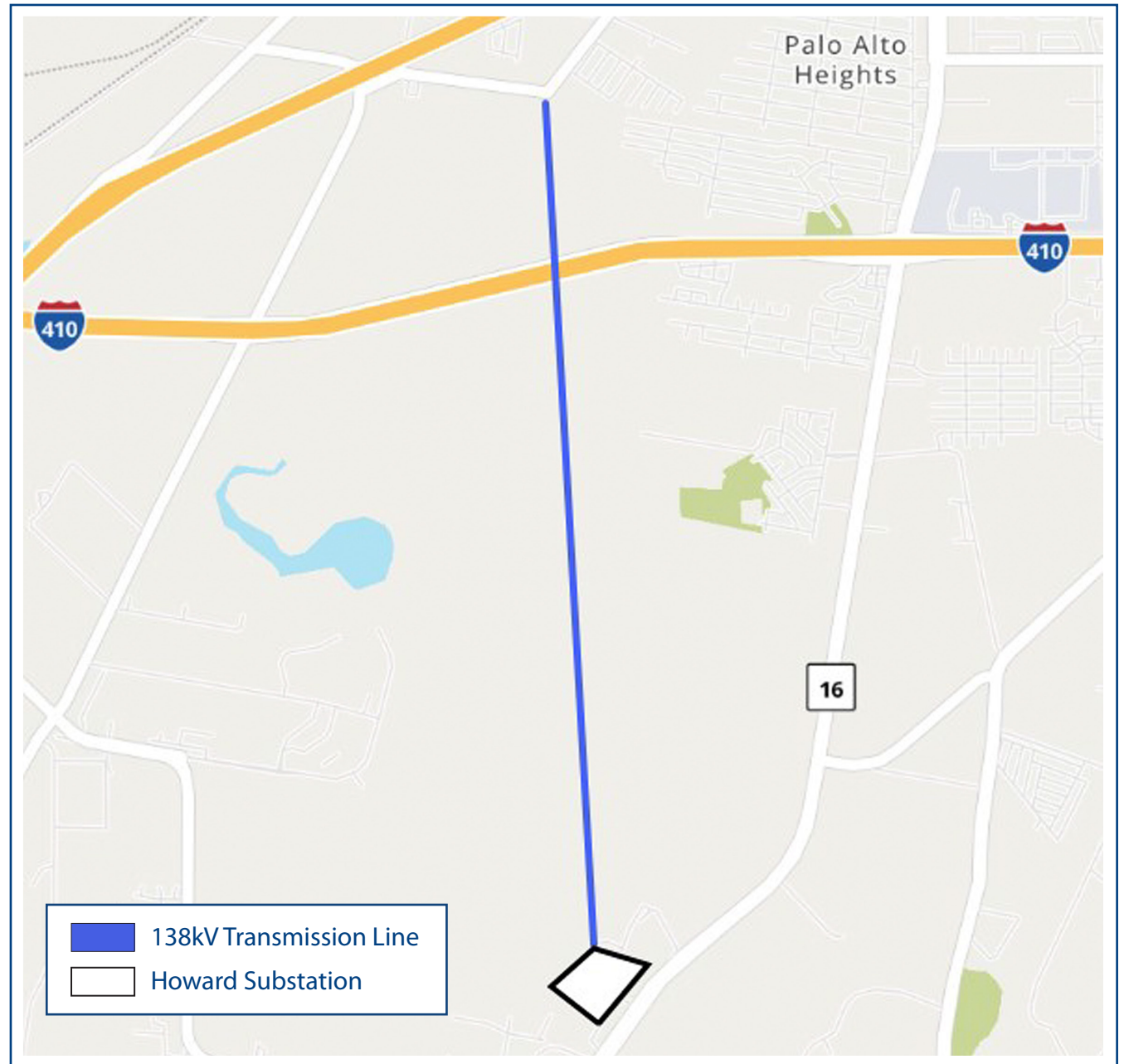
Our contractor will work to minimize impact to area residents. Construction activities will be focused along the Right-of-Way (ROW) of the existing transmission line route shown on the Project Location Map.

Activities that may be typical during the construction project are the presence of construction equipment and materials, as well as intermittent highway closures while construction is in progress over Loop 410.

Construction is scheduled to begin November 12, 2024. Scheduled completion is May 16, 2025.

Why is this project needed?

Maintaining our customers' need for reliable electric power is of utmost importance. The rebuilt transmission line is necessary to support the accelerating growth in San Antonio. It will also increase the reliability of Texas' electric grid by upgrading a critical path for electric transmission.



Project Location Map