

Project Features

- ▲ Existing Project Station
- ◇ Project Route Mile Marker
- Project Route
- ▭ Right-of-Way
- ▭ Study Area

Existing Utilities

- Existing 138KV Transmission Line
- Existing 345KV Transmission Line

Existing Land Use Features

- Communication Tower
- Water Well
- Oil / Gas Well
- Oil / Gas Pipeline

Transportation Features

- State Highway
- FM Road
- County / Local Road
- ✈ Private Airport

Hydrologic Features

- River or Stream
- Waterbody
- FEMA Flood Plain
- NWI Mapped Wetland

Administrative Boundaries

- ▭ Parcels in the Study Area
- ▭ County Boundary



Aerial Photography: Provided by Google
Date: 2022

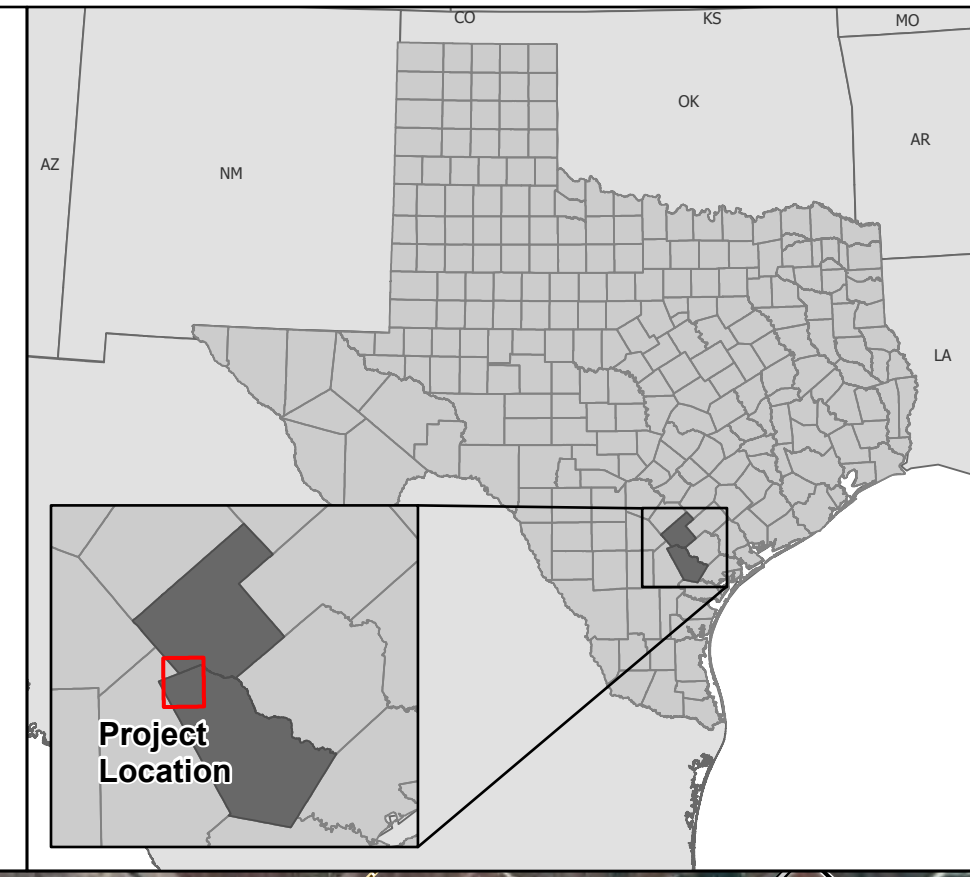
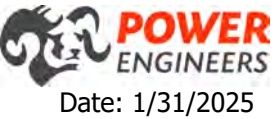
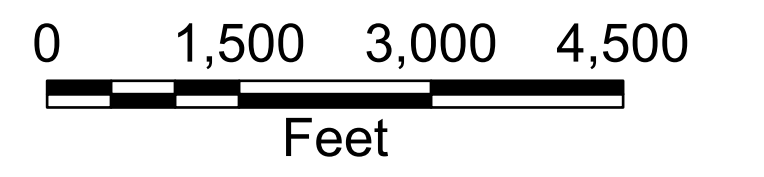
Accuracy for Google Imagery is approximately ±10 feet.

Some data layers including tract boundaries, roads, and oil/gas pipelines obtained from third-party sources may be inaccurate to varying degrees. These data have not been corrected in all locations and should be used as a general guide to feature locations only. Digitization of proposed transmission line segments was performed based on aerial interpretation of these features.

Some legend symbols are enlarged for easier identification. Some features are exaggerated to better identify paralleling opportunities.

**PAWNEE TO TANGO
345 KV TRANSMISSION LINE
REBUILD PROJECT**

**LAND USE FEATURES IN THE
VICINITY OF THE PROJECT ROUTE**



Draft

