

## Who is CPS Energy?

Established in 1860, CPS Energy is the nation's largest public power, natural gas, and electric company, providing **Safe, Reliable,** and **Affordable** service to 884,811 electric and 366,709 natural gas customers in San Antonio and portions of seven adjoining counties. Our customers' combined energy bills rank among the lowest of the nation's 10 largest cities – while generating \$8 billion in revenue for the City of San Antonio for more than seven decades.

As a trusted and strong community partner, we continuously focus on job creation, economic development, and educational investment. True to our **People First** philosophy, we are powered by our skilled workforce, whose commitment to the community is demonstrated through our employees' volunteerism in giving back to our city and programs aimed at bringing value to our customers.

CPS Energy is among the top public power wind energy buyers in the nation and San Antonio is #1 in Texas for solar energy capacity.



**Underground Lines Connected to Electric Meter**

## How can you get more information about this project?

Project information is available by project location on our website at [cpsenergy.com/infrastructure](http://cpsenergy.com/infrastructure).

## Who can answer your questions?

If you have questions about the project please call, write, or email:

Jake Martinez, Project Engineer  
Conversion Project  
Hunters Creek subdivision  
(Huebner Rd & Hunters Rock)  
Mail Drop RT0801  
P.O. Box 1771  
San Antonio, Texas 78296-1771  
(210) 353-8865  
[jmartinez13@cpsenergy.com](mailto:jmartinez13@cpsenergy.com)



# SERVICE RELIABILITY CONVERSION PROJECT



**Typical Overhead Electric Line**

RELIABILITY | CUSTOMER AFFORDABILITY | SAFETY  
SECURITY | RESILIENCY | ENVIRONMENTAL RESPONSIBILITY

FINANCIALLY RESPONSIBLE

# INFORMATION ABOUT THE SERVICE RELIABILITY PROJECT

## **What is a conversion project?**

A conversion project is when overhead power lines are replaced with underground lines for improved service reliability.

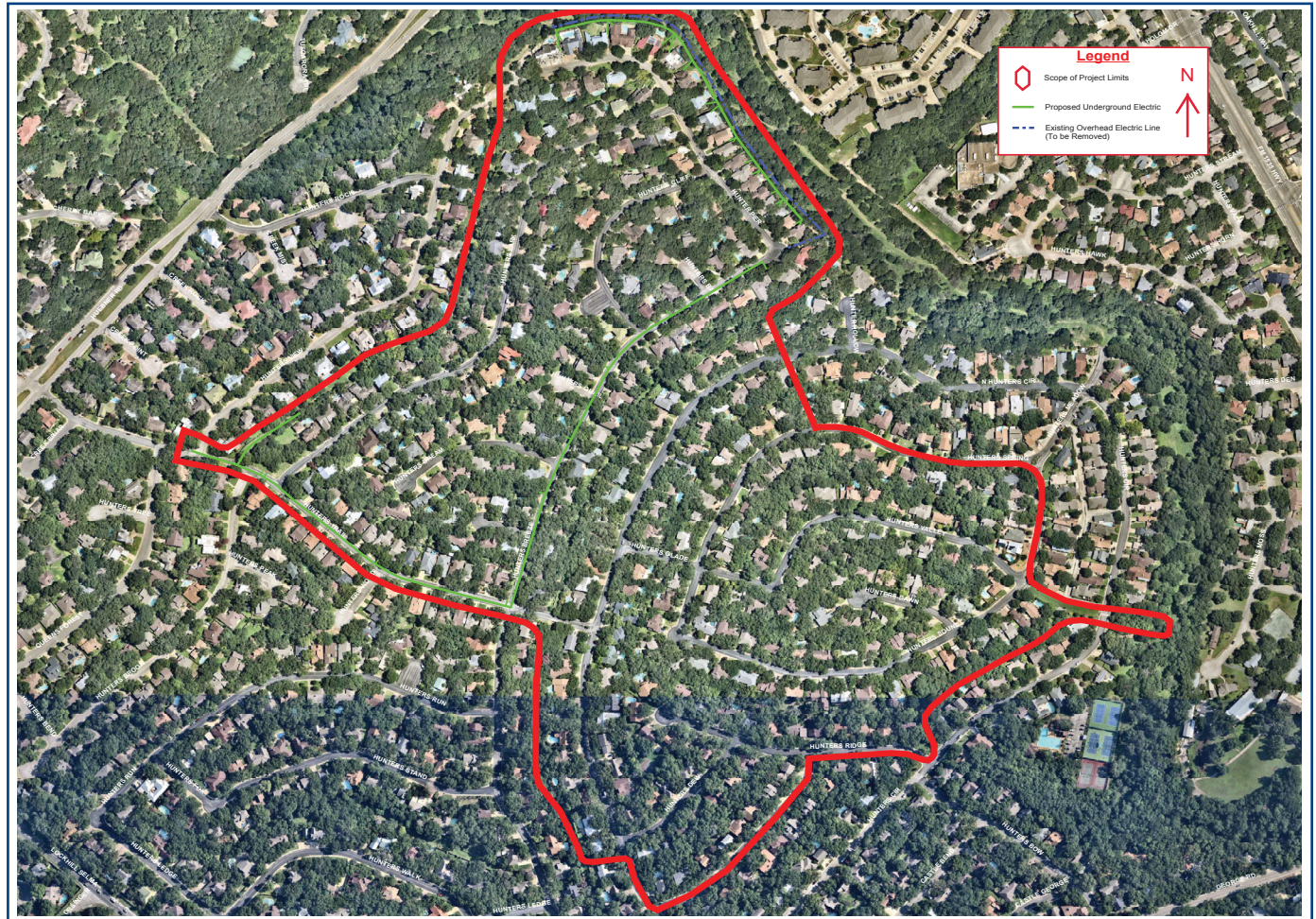
## **What are benefits of replacing overhead lines with underground facilities?**

Placing electric facilities underground improves service reliability because buried lines are protected from damage by falling tree limbs, animals, balloons, high winds, and other weather impacts. Burying power lines also eliminates the chance for vehicle collisions with poles, eliminates fire hazards, and safety risks caused by downed power lines.

## **What work is performed to convert the power lines?**

Engineering and construction personnel, including CPS Energy contractors, may perform on site field assessments and construction activities in the easements on properties. These activities may require access to your property, and our personnel will attempt to contact you before entering. Temporary spray paint markings may be made to identify underground utility locations. As our work moves through your neighborhood, crews will ensure your property is returned to the state it was in when work began.

**Project information is available at [cpsenergy.com/infrastructure](http://cpsenergy.com/infrastructure).**



## **Hunters Creek subdivision (Huebner Rd & Hunters Rock)**

**Typical  
Underground  
Electric  
Facilities**

